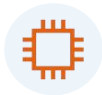


# FD514GB-PFX-R410

## 4GE XPON ONU



High Speed CPU



Low Power Consumption



Software Customization



Optional Shell Supply



### Brief Views

FD514GB-PFX-R410 dual-mode ONU is one of the XPON optical network unit design to meet the requirement of the broadband access network. It apply in FTTH/FTTO to provide the data, video service based on the XPON network.

The product provides 4 GE ports with PoE/PoE+ functions, which can not only transmit data, but also connect to terminal devices such as cameras through its PoE ports to supply power, making the networking more flexible.

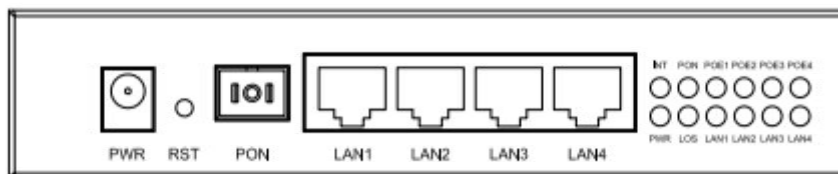
FD514GB-PFX-R410 Corridor ONU has the characteristics of high reliability, quality of service (QoS) guarantee, easy management, flexible upgrade and expansion and networking. The various functions and performance indicators of the equipment meet ITU-T related recommendations, relevant international standards and technical specifications of industry standards, and have good compatibility when used with mainstream manufacturers' central office OLTs.



## Functional Feature

- In compliant with ITU - T G.984 ,IEEE802.3ah Standard
- Support POE, POE+ function
- Support ONU auto-discovery/Link detection/remote upgrade of software
- Support SN and LOID+Password multiple registration methods
- Support port VLAN configuration
- Support mac-address learning
- Support port-based rate limitation and bandwidth control
- Support port flow-control
- Support broadcasting storm resistance function
- Support igmp transparent/snooping/proxy mode
- Support remote management configuration
- Support Dynamic Bandwidth Allocation (DBA)
- Support AES encryption and decryption
- EMS network management based on SNMP ,convenient for maintenance
- Support power-off alarm function ,easy for link problem detection

## Product Interface and LED



## LED Definitions

Indicator		Description
PWR	Power status	On: The ONU is power on Off: The ONU is Power off
PON	ONU Register	On: Success to register to OLT; Blinking: In process of registering to OLT; Off: Failed to register to OLT or no normal optical signal input;
LAN1-4	LAN Port status	On: Ethernet connection is normal Blinking: Data is being transmitted through the Ethernet port Off: Ethernet connection is not set up
LOS	Optical signals	On: Optical power lower than receiver sensitivity Off: Optical in normal
POE	POE status	On: The ONU POE power supply on Off: The ONU POE power supply off
INT	Internet status indicator	On: The routed WAN Internet access service is normal. Off: The routed WAN Internet access service is abnormal.

## Hardware

### ● GPON/EPON Port

- Single mode single fiber
- GPON: FSAN G.984.2 standard, Class B+
- EPON: 1000BASE-PX20+ symmetric
- GPON: 2.488Gbps/1.244Gbps downstream/upstream
- EPON: 1.25Gbps downstream/upstream
- Wavelength :  
Transmit: 1310nm    Receiver: 1490nm
- Receiving sensitivity :  
GPON: -28dBm    EPON: -27dBm
- Saturated power :  
GPON: -8dBm    EPON: -3dBm
- Transmitting power :  
GPON: 0.5~5dBm    EPON: 0~4dBm
- **User Port(LAN)**
- RJ-45 connector
- 4\* 10/100/1000Mbps adaptive Ethernet port
- Full/half duplex
- Auto MDI/MDI-X

### ● Indicators

- PWR / PON / LOS / LAN / INT / POE

### ● Power

- Support POE feed (PSE)
- PSE output voltage: 48V DC
- The maximum output power of the whole machine: 56W, the maximum output power of a single port: 30W
- Max machine power consumption: <60W

### ● Dimension and Weight

- Item Dimension:
- Item Dimension: 150mm(L) x 115mm(W) x 30mm (H)
- Item Net Weight: about 500g

### ● Environmental Specifications

- Operating temperature: -30 to 65° C
- Operating humidity: 10% to 90%(Non-condensing)

## Software

- **Management**

- EPON :OAM / WEB / Telnet
- GPON:OMCI / WEB / Telnet

- **Register**

- Auto-discovery/Link detection/Remote upgrade software
- Auto/MAC/SN/LOID+Password authentication

- **Switch**

- MAC address learning
- MAC address learning account limit
- Broadcast storm suppression

- **Multicast**

- IGMP V2
- IGMP VLAN
- IGMP transparent/Snooping/Proxy

- **Security**

- Firewall
- MAC address/URL filter
- Remote WEB/Telnet access control

## Application

- Typical Solution: FTTH
- Typical Business: Internet

